



LATABA

**LATVIJAS AKADĒMISKO BIBLIOTĒKU ASOCIĀCIJAS
SAPULCE - SEMINĀRS**

Latvijas Akadēmisko bibliotēku asociācija

Bibliotēku tehnoloģiskās sistēmas

Pēdējie risinājumi 2017

**Runātājs
Algis Mikoliūnas
UAB „ATEA”**

**2017.gada 17.maijā
Rīgas Stradiņa Universitāte**

Our products and services

Paslaugos []



Programinė įranga []

Infrastruktūriniai sprendimai []

- Only equipment from reputable manufacturers is used for implemented systems
- Services are provided by highly qualified certified professionals

Who we are?

- The biggest IT, security and special solutions implementator in Baltics
- +700 employees in Baltics
- +600 technological certificates in Baltics
- +4000 public and private customers in Baltics
- +100 mln. Sales revenue in Baltics
- +20 years experience in implementation and maintenance of +50 libraries technological systems
- Bibliotheca+3M authorized representative in Lithuania, Latvia and Estonia

Library technology leaders in the world

historical bibliotheca

- ❑ 100% library focused
- ❑ 19 years in the library industry
- ❑ Established ILS partnerships
- ❑ Innovative products
- ❑ Entrepreneurial culture
- ❑ 7,000 customers

historical 3M Library Systems

- ❑ 46 years in the library industry
- ❑ Digital product integration
- ❑ Strong 3rd party integrations
- ❑ Excellent software UI design
- ❑ High quality products and support
- ❑ 23,000 customers

now Bibliotheca+3M

- ❑ 100% library focused
- ❑ Digital and physical offerings
- ❑ Strong ILS and 3rd party partnerships
- ❑ Innovative culture
- ❑ High standards for support
- ❑ 30,000 customers

What does it mean for You?



Continued support of existing products



- All library staff
- joined new organization



Previous leadership still in place



Increased digital integration



New innovative products



Service levels continue and improve

Implementations in all major continents with distributors in 70+ countries, supported from regional centers



The next generation system, interconnecting technologies and experience from Bibliotheca and 3M

- The new design models
- The modular architecture
- Significantly expanded functionality
- All the best former technical and technological solutions are saved
- The new important technical solutions are implemented
- Updated internal hardware and software
- Enhanced throughput
- Simplified operating procedures
- The new solutions for EM systems migration to RFID
- The new functional devices integrated into the system
- Enhanced remote administration, monitoring and diagnostics
- Advanced technical support system introduced
- Hardware is produced only in Europe and the US

**When the demand for library services is going up,
and library resources are not....**



Demand for services



Resources

bibliotheca+3M and ATEA can help!

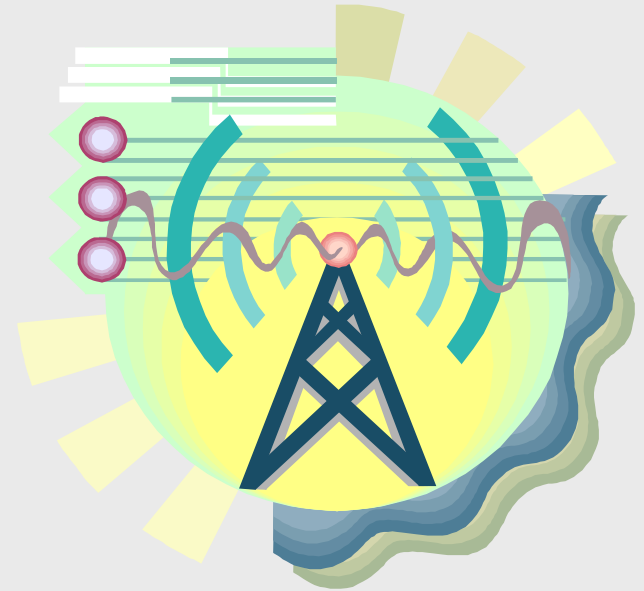
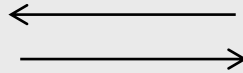
Library system technologies

- Barcode
- Elektromagnetic (EM)
- RFID HF (13.56 MHz)
- RFID UHF (860-960 MHz)
- Hybrid



What is RFID?

Radio



Frequency

Identification

Simply ...

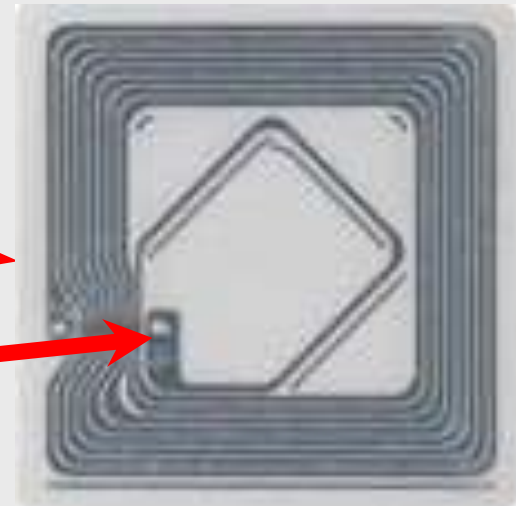
Barcode is converted:



Into RFID code:

Antenna

**Integrated
chip**



WHY RFID?



- Works remotely
- Doesn't require alignment
- Doesn't require direct visibility
- Multiple tags can be read at once
- Long life time
- High reliability
- High speed processing
- ID & security in the same technology
- Safe for people & magnetic media
- RFID is the background for automation of library processes

bibliotheca+3M RFID sistema



RFID tag

- ISO 15693-3 and 18000 compliant
- ISO 28560 compliant
- Fully rewriteable
- Security status stored on tag
- Additional information can be stored
- Archival quality adhesive for library use
- No tag assembly required
- Up to 2,048 bits of memory
- 100% quality tested
- Long term reliability tested
- Data retention up to 50 years



SelfCheck system

- SelfCheck procedure w/o staff help
- Multiple item processing
- ID and security processed
- ISO 28560 compliant
- Dual/triple function: barcode/EM/RFID
- Multiple languages
- Patron card types
- Remote administration, diagnosis and statistics
- Various payment options
- Choice of design version
- Choice of colour solution



SelfCheck system solutions



selfCheck™
components



selfCheck™
500



selfCheck™ 1000



hybrid selfCheck™
1000



hybrid selfCheck™
components



selfCheck™
500D



selfCheck™ 1000D



hybrid selfCheck™
1000D

Additional functionality of SelfCheck systems



Central Library



Check-out



Renew



Check-in



Account



Make Payment

UPCOMING EVENTS

Tomorrow

October 20



Adult Coloring
10:00 AM - 11:00 AM
Main Library
[Show Details](#)



Lego Club
10:00 AM - 11:00 AM
Main Library
[Show Details](#)



Mudbug Festival
1:00 PM - 5:00 PM
Main Library Parking Lot
[Show Details](#)

Friday

October 21



Family Game Night
6:00 PM - 8:00 PM
Main Library
[Show Details](#)

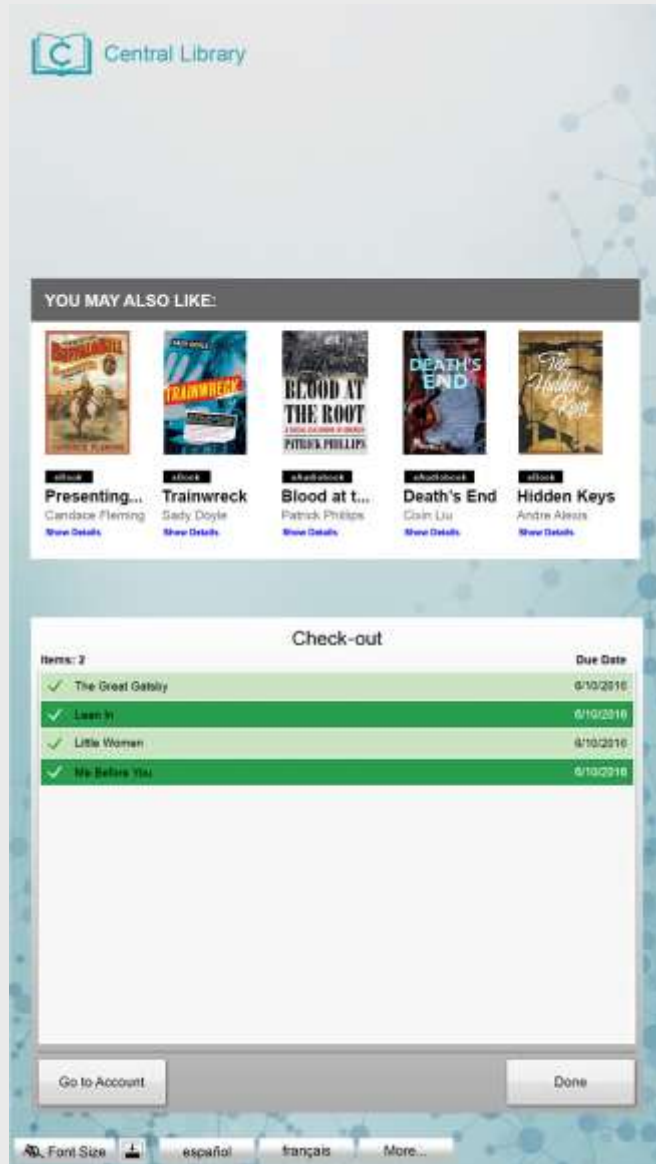
Font Size

español

français

More...

Additional functionality of SelfCheck systems



Other SelfCheck solutions

Smart shelf



Remote locker



Other SelfCheck solutions

Smart locker for laptops loan



Other SelfCheck solutions

Bookdrop (internal)



Bookdrop (external)



Other SelfCheck solutions

SelfCheck with sorter



Staff workstation

- Checkin & Checkout by librarian
- Programming of tags
- Conversion of barcode to RFID
- Multiple item processing
- ISO 28560 compliant
- Dual function: barcode/RFID
- Large antenna-pad
- Special shape & surface of antenna-pad
- On counter or in counter installation
- Can be delivered w/o PC and/or barcode scanner



RFID workstations



RFID workstation



RFID workstation
shielded



RFID workstation
print



RFID workstation
USB



Print/conversion workstation

- RFID tag printing & programming
- Text & graphic information printing
- Unique barcodes printing
- High volume & Regular volume versions



Digital library assistant

- Cordless, lightweight, ergonomic design, convenient to use in one hand
- Multi-tasking performance of:
 - Remotely shelf reading
 - Inventory
 - Find items on exceptions lists
 - Find correct place for items
 - Find items not checked out/in
 - Change security status
 - Collect in-house use stats
 - Pull holds
 - Several functions simultaneously
- Memory size: for 1,000,000 items
- Battery charger & case







Security gates

- Recognize tag ID and security status
- No application server required
- Functions when ILS is down
- Virtually no false alarms
- ISO 28560 compliant
- Integrated patron counter
- Audible, visible and remote alarms
- Configurable alarm colour
- Modern design
- EM, RFID and Hybrid models
- Choice of gate design
- Premium – up to 1,65 m



RFID gate models



RFID gate basic



RFID gate



RFID gate premium

EM and hybrid gate models



Tattle-Tape™
gate



Tattle-Tape™
gate clear



hybrid gate



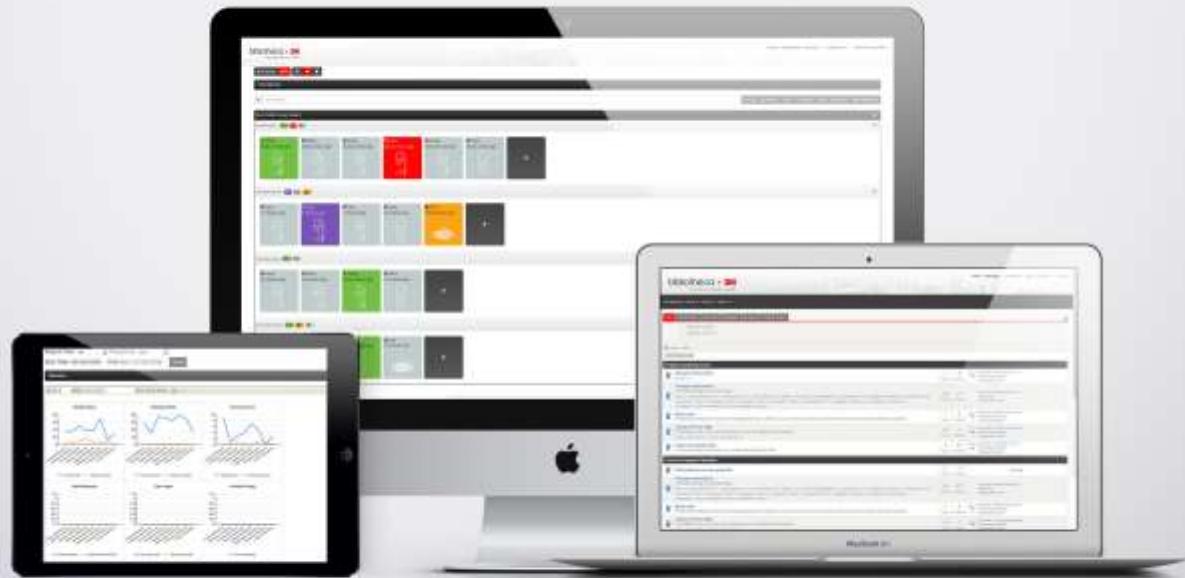




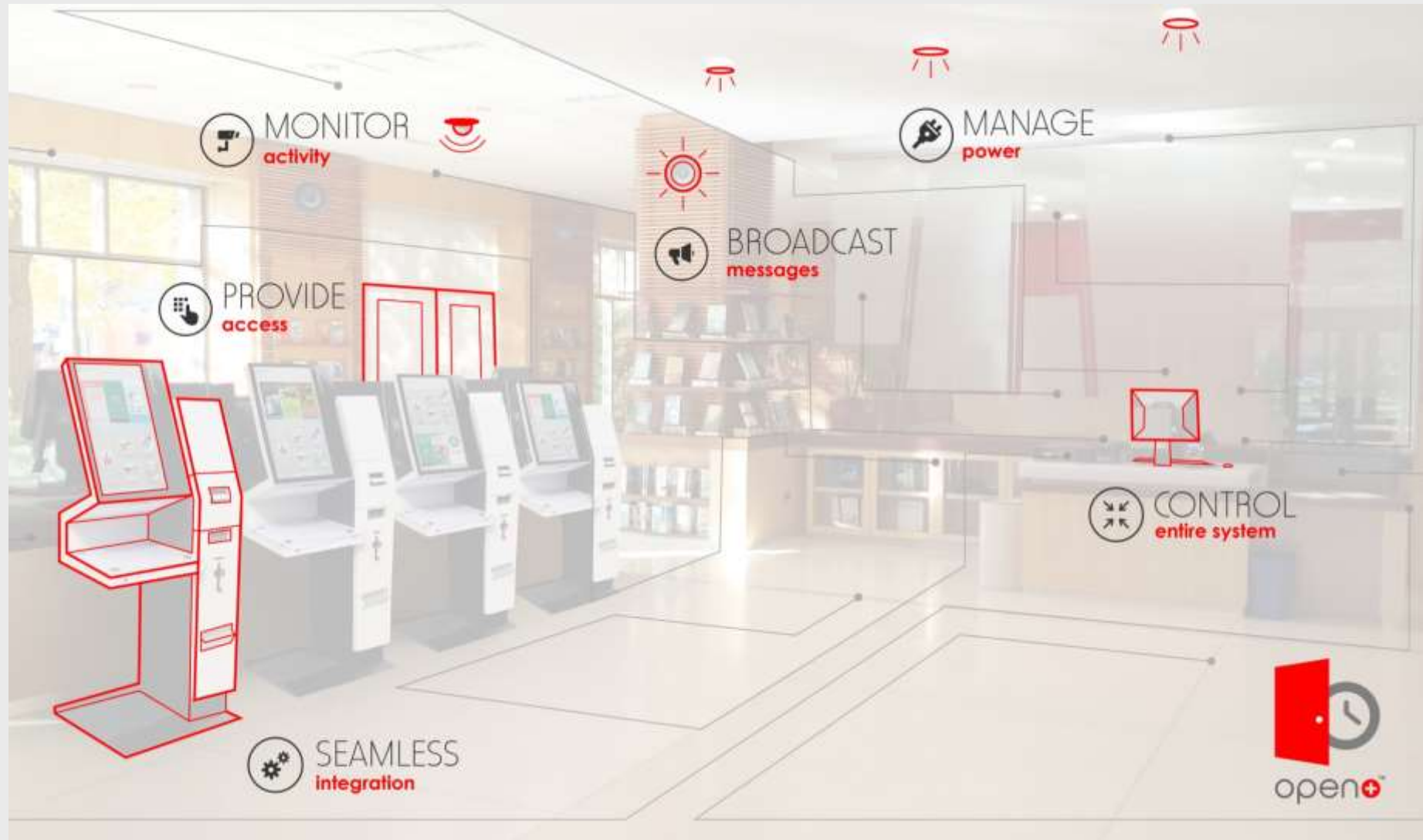
System diagnostics, management and statistics

Management software

- Hardware remote configuration
- Real-time system status monitoring
- Detailed statistics and reports
- SW and documentation updates
- „On line“ forum



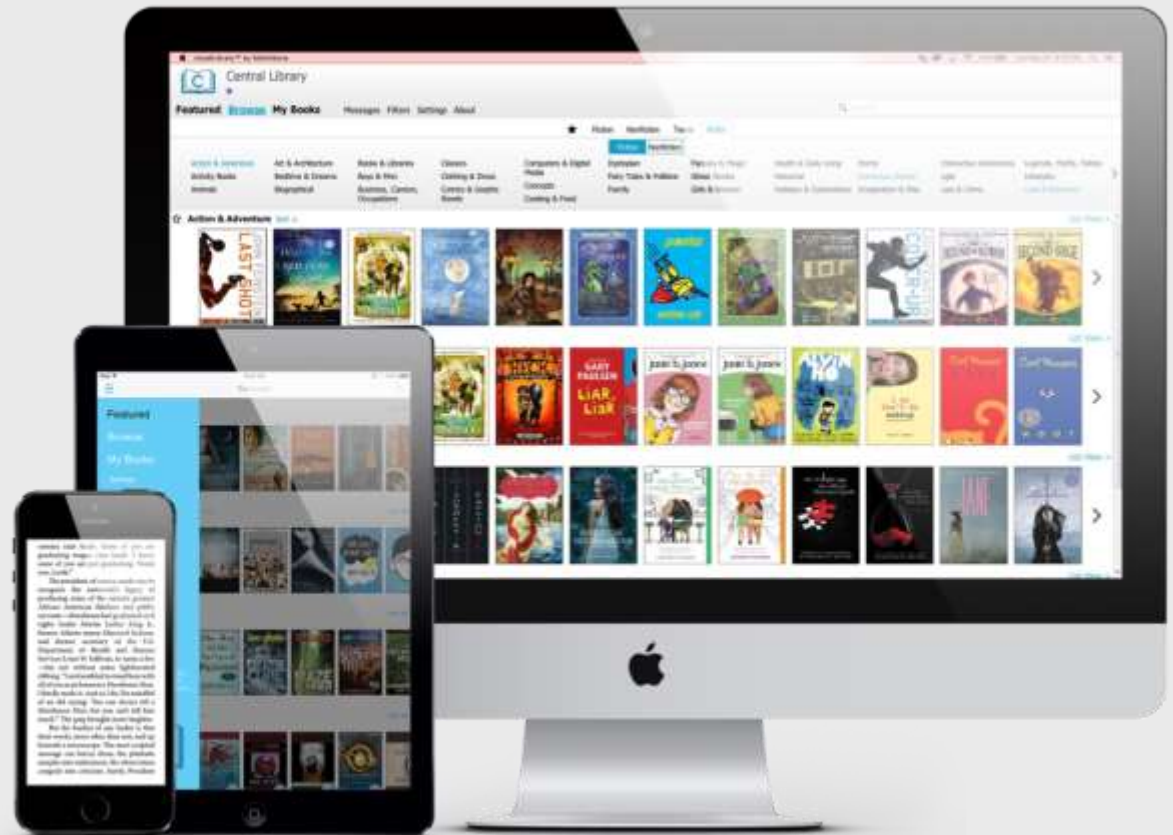
Other new solutions



Other new solutions

cloudLibrary™

- Designed specifically for libraries technical solution provides for patrons access to digital collections of cloudLibrary™ ensures digital circulation and integrate seamlessly
- Developed using the best electronic book (eBook) and electronic audio books (eAudiobook) lending experience



Why to choose RFID?

Benefits for library

- High reliability RFID processing of library items
- Increased circulation of library items
- Reduced time for circulation, service and inventory
- Fast inventory and search of library items
- Possibility to check in and check out when the ILS is offline
- Effective antitheft protection of library items
- Free staff from routine tasks
- Improve circulation efficiency and shelf accuracy
- Maximize service to academic community
- Detailed monitoring, reporting and diagnostics system

Why to choose RFID?

Benefits for patrons

- Selfservice for choice of library items
- Ensuring the privacy of selfservice
- Faster and more convenient usage of library funds
- Simple patron selfcheck out and selfcheck in
- Possibility to perform item renewals without being required to have the item physically present
- Possibility to interface with patrons and to print receipts in multiple languages
- Possibility to get for usage items lost in the library funds
- Possibility to get faster for usage rear items or/and items of high demand

Why to choose bibliotheca+3M?

- Superior products (functionality, reliability, quality, lifetime, design)
- Manufacturer's experience: 65 years (19+46)
- Number 1 manufacturer in the whole world
- Reliable partnership with ATEA from 1997
- The only system integrated with ALEPH, ALISE and LIBIS
- System operating with multiple format RFID tags
- ISO standard ISO 28560 compliant
- Dual/triple technology: RFID/EM/barcode
- Enhanced security
- Remote monitoring, diagnostics and reporting system
- Trusted supplier and integrator, qualified technicians with experience of +50 implemented systems
- Robust service and software support
- Only Bibliotheca+3M RFID systems running in Latvia and Lithuania

OUR MISSION

- Close cooperation with libraries community in all project stages
- Periodical information of libraries about the newest library technological solutions
- Evaluation of libraries demands and possible acceptable solutions and providing suggestions for new systems and upgrades of existing systems
- Providing methodological, technical and technological assistance in the preparation of investment projects for library systems, extension of services for patrons and improvement of staff working conditions
- Preparation of librariy technological system projects, to ensuring the highest quality works during installation and maintenance of these systems, and supply of the necessary materials and spare parts

Need more information?

bibliotheca+**3M** authorised representative in
Lithuania, Latvia and Estonia

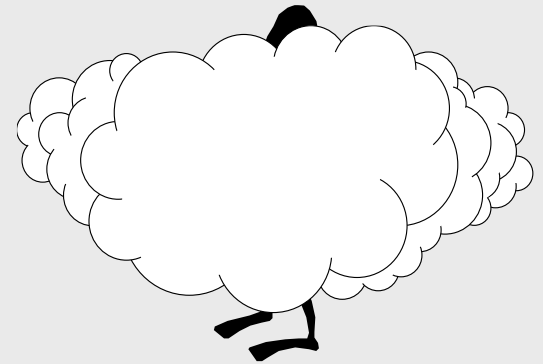
UAB „ATEA“

J. Rutkausko str. 6, LT-05132 Vilnius

Tel.: (+370 5) 239 78 30, faks.: (+370 5) 239 78 31

E-mail: kontrolessistemas@atea.lt

Jautājumi?



Paldies!

Examples of installed solutions























































RFID systems in Lithuanian libraries

- Lithuanian health sciences university library
- LSMU Veterinary academy library
- Mykolas Romeris university library
- Shiauliai university 2 libraries
- Klaipėda university library
- Alytus college library
- Anykščiai district municipality public library
- Vilnius technical university library
- Vilnius college of technology and design 3 libraries
- Lithuanian Academy of sciences library
- Library of the Seimas of the Republic of Lithuania
- Shiauliai county Povilas Višinskis public library
- Kaunas county public library
- Kaunas district municipality public library
- Kėdainiai district municipality public library
- Klaipėda city public library
- Elektrėnai municipality public library
- Vilniaus county Adomas Mickevičius public library
- Zarasų district municipality public library
- Aleksandras Stulginskis university 2 libraries
- Jurbarko district municipality public library

RFID systems in Lithuanian libraries (continuation)

- Kauno college library
- Molėtų district municipality public library
- Lithuanian Maritime academy library

Designed or in the process of the design:

- Akmene district municipality public library
- Lithuanian medical library
- Šiauliai college scientific library
- Biržai district municipality public library
- Kupiškis district municipality public library
- Skuodas district municipality public library
- Kėdainiai district municipality children library
- Raseiniai district municipality public library
- Pagėgiai municipality public library
- Ukmergė district municipality public library
- Rokiškis district municipality public library
- Šalčininkai district municipality public library
- Plungė district municipality public library
- Palanga municipality public library
- Lithuanian university of educational sciences library
- Šakiai district municipality public library
- Kelmė district municipality public library Tytuvėnai branch
- Šilutė district municipality public library Žemaičių Naumiestis
- Kalvarija municipality public library
- Kaunas technical college
- Vilnius college

RFID systems in Latvian libraries

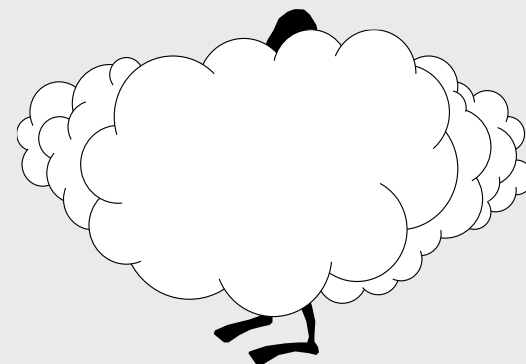
Implemented:

- Nacional Library of Latvia
- Riga technical university 4 libraries
- Riga Stradina university 2 libraries
- Liepaja university library (integrated with Alise)
- Liepaja scientific public library (integrated with Alise)
- Latvija university 4 libraries
- Riga construction college (integrated with Alise)
- Daugavpils university library (Bookdrop)
- Bauska town public library (Bookdrop)

Designed or in the process of the design:

- Latvija university Science House new library
- Bauska town public library
- Jelgava city public and children libraries
- Ventspils music school library
- Ventspils public libraries
- Riga technical university library (extension of the system)
- Riga Stradina university central library (extension of the system)
- Jūrmala central library
- Stopinu culture centre library
- Goethe Institut Riga library

Jautājumi?



Paldies!