



LATABA Konference

Latvijas Akadēmisko bibliotēku asociācija

Jaunās tehnoloģijas bibliotēkām **New technologies for libraries**

2012.gada 29.marts
Rīgas Tehniskā universitāte
Kaļķu iela 1, 201. telpa

**When the demand for library services is going up,
and library resources are not....**



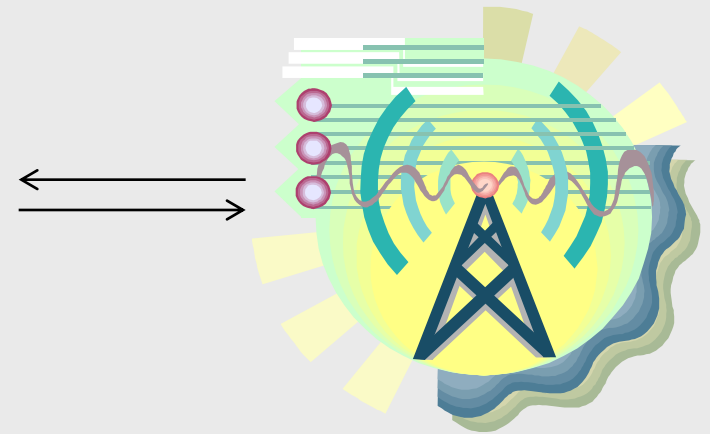
3M partner AT&A can help!

AT&A

3M *Innovation*

What is RFID?

Radio



Frequency

IDentification

Technical Advantages of RFID

- Works remotely
- Doesn't require alignment
- Doesn't require direct visibility
- Multiple tags can be read at once
- Long life time
- High reliability
- High speed processing
- ID & security in the same technology
- Safe for people & magnetic media
- RFID is the background for automation of library processes



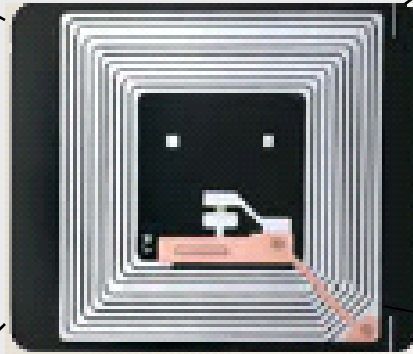
3M™ RFID Tag

- ISO 15693-3 and 18000 compliant
- ISO 28560 ready
- 1,024 - 2,048 bits of memory,
- Fully rewriteable
- 100% quality tested
- Long term reliability tested
- Archival quality adhesive for library use
- No tag assembly required
- Security status stored on tag
- Fully guaranteed for life of the item to which it is originally affixed (life time warranty)



3M™ RFID System (in general)

- ADA Compliant
- FCC/UL/CE Compliant
- No application server



3M RFID System in RTU

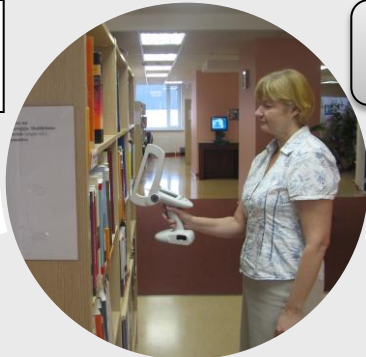
Code conversion
and printing



System
management
and control



Surveillance and
recording of
incidents



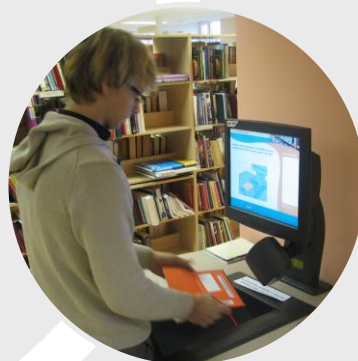
RFID ID and
security tag



Search and
inventory of items



Multipurpose staff
workstation



Self check-in/out



Controlled exit

3M™ SelfCheck System

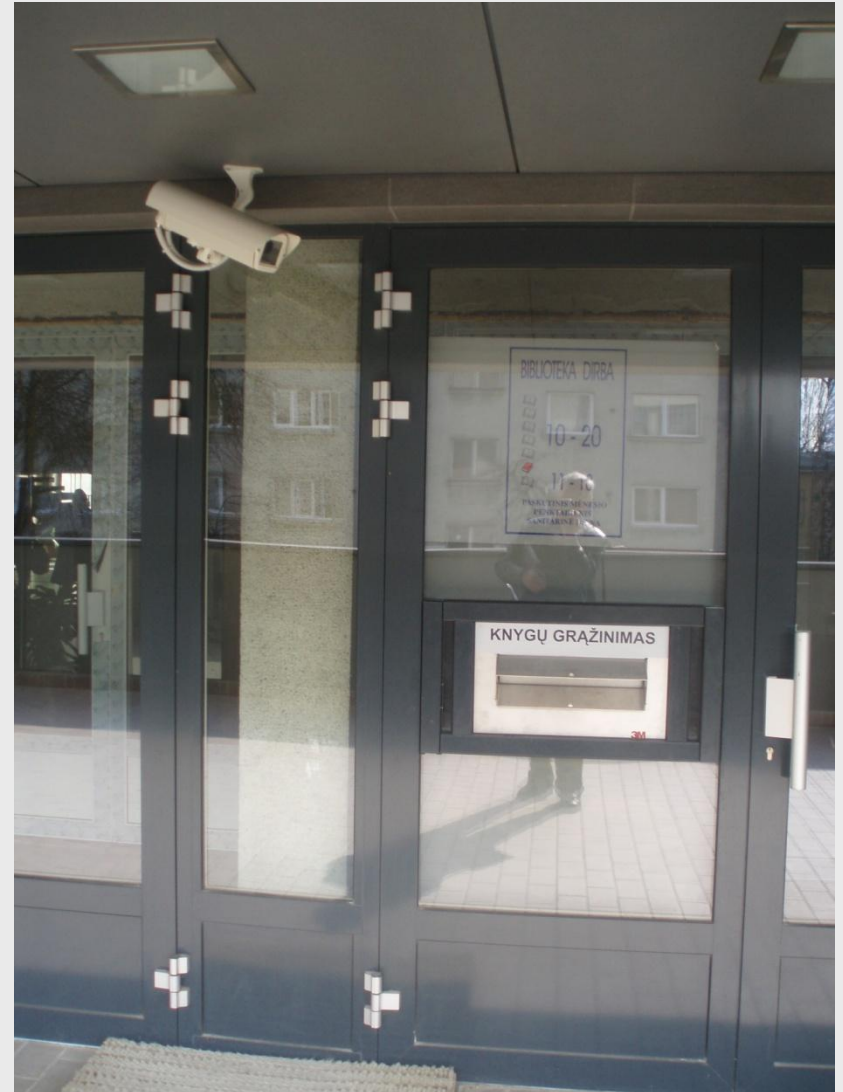
- 3M Touchscreen
- Multiple item processing
- ISO 28560 ready
- Dual-function barcode/RFID
- Multiple languages
- Patron card types
- Store and Forward
- Fines and Fees
- Choice of design version



3M™ SelfCheck System versions



3M™ SelfCheck in System



3M™ Bookdrop

Images of Bookdrop



3M™ Staff Workstation

- Check in & Check out by librarian
- Programming of tags
- Conversion of codes
- Multiple item processing
- ISO 28560 ready
- Dual-function barcode/RFID
- Large antenna-pad
- Special shape & surface of antenna-pad
- On counter or in counter installation
- Can be delivered w/o PC



3M™ Digital Library Assistant

- Cordless, one-handed, lightweight, ergonomic design
- Multi-tasking performance of
 - Shelf reading
 - Find items on exceptions lists
 - Inventory
 - Collect in-house use stats
 - Pull holds
- Identify individual items not checked out/in
- Memory size for 1,000,000 items
- Battery charger & case



3M™ Detection System

- Recognize tag security status
- ISO 28560 ready
- No application server required
- Functions when ILS is down
- Virtually no false alarms
- Patron counter integrated into system
- Audible, visible and remote alarms
- Wi-Fi connection optional



3M™ Print Conversion station

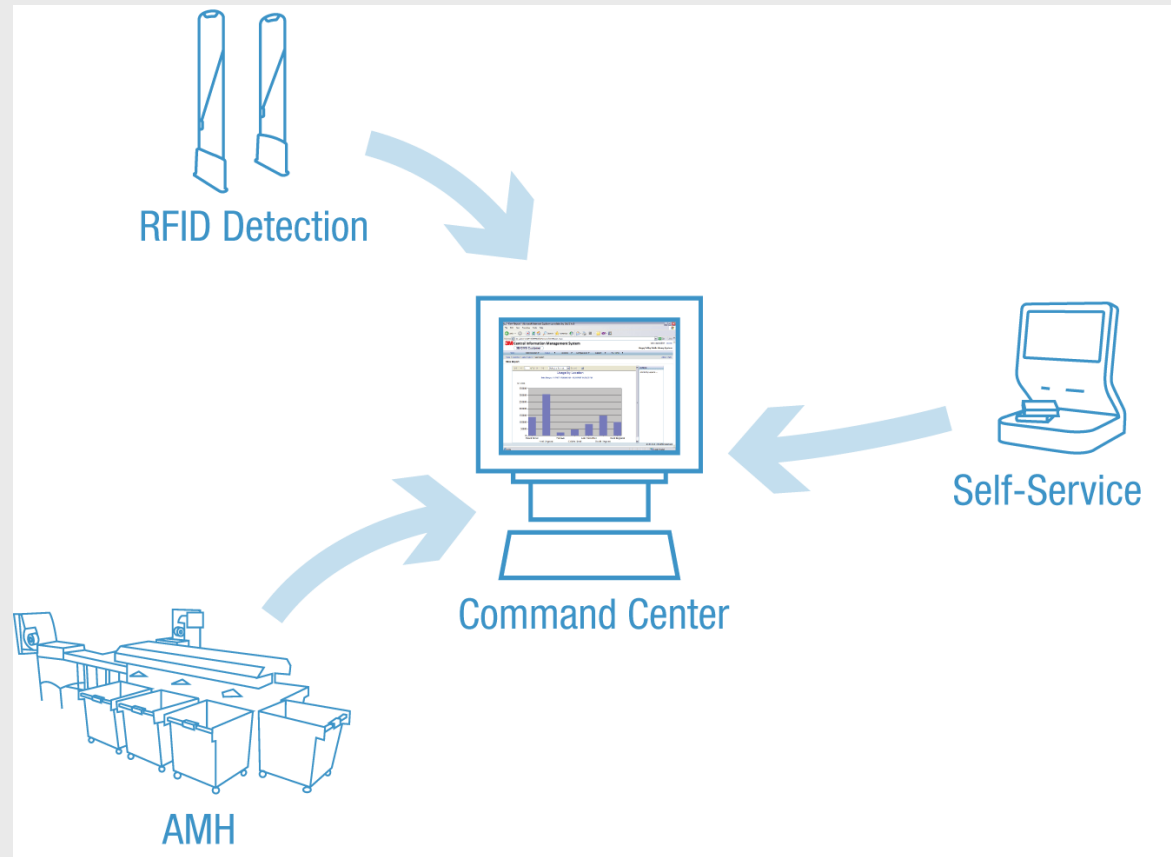
- Unique barcodes printing
- RFID tag printing & programming
- Text & graphic information printing
- High volume & Regular volume versions



3M™ Other new solutions

Command center

- Configuration of system
- Real-time system status monitoring
- Detailed statistics



3M™ Other new solutions

Mobile workstation

- Check-out and check-in functions
- Check status of items and patrons
- Change security status of items
- Store and forward transactions
- Process bar-code and RFID items
- Connects via SIP over Wi-Fi
- Bluetooth receipt printer



3M™ Other new solutions

SelfPay system

- Fines & Fees payment at the SC
- Integrated with all SC versions
- Fit to be used with national currencies
- Possible payment versions
- Can be integrated into library furniture



Why choose RFID?



Benefits for patrons

- Selfservice for choice of library items
- Ensuring the privacy of selfservice
- Faster and more convenient usage of library funds
- Simple patron selfcheck out and selfcheck in
- Possibility to perform item renewals without being required to have the item physically present
- Possibility to interface with patrons and to print receipts in multiple languages
- Possibility to get for usage items lost in the library funds
- Possibility to get faster for usage rear items or/and items of high demand

Why choose RFID?



Benefits for library

- High reliability RFID processing of library items
- Increased circulation of library items
- Reduced time for circulation, service and inventory
- Fast inventory and search of library items
- Possibility to check in and check out when the ILS is offline
- Effective antitheft protection of library items
- Free staff from routine tasks
- Improve circulation efficiency and shelf accuracy
- Maximize service to academic community!
- Detailed monitoring, reporting and diagnostics system



Why Choose 3M?

- Superior products (quality, reliability, lifetime, functionality)
- Partnership with ATEA from 1997
- Worldwide experience with RFID since 1994
- The only system integrated with ALEPH, ALISE and LIBIS
- The only system operating with multiple format RFID tags
- The newest ISO standard ISO 28560 ready
- Dual ID technology: RFID/barcode
- Enhanced security
- Remote monitoring, diagnostics and reporting system
- Trusted supplier and integrator
- Robust service and software support
- Many RFID systems running in Latvia and Lithuania

RFID LIBRARIES IN LATVIA AND LITHUANIA

LATVIA

- Riga Technical University Library
 - I stage – implemented on Q4, 2011
 - II ir IV stages – will be implemented on Q2, 2012
 - IV etapas – will be implemented on Q4, 2012
- Riga Stradina University Library - Q4, 2011
- Liepaja University Library (integrated with Alise) - Q4, 2011
- Estimated implementations in 2 other libraries

LITHUANIA

- Lithuanian University of Health Sciences Library – The first RFID library in Lithuania – implemented on Q1, 2007
- RFID systems implemented in 10 other Academic Libraries
- RFID systems implemented in 8 other Public Libraries
- RFID systems are being implemented now in 2 Academic and 2 Public Libraries

Want more information?

3M Library Systems website www.3m.com/us/library

3M Library Systems authorised representative
in Latvia and Lithuania

UAB „ATEA“

Laisves av. 3, LT-04215 Vilnius, Lithuania

Phone: (+370 5) 239 78 30, faks.: (+370 5) 239 78 31

E-mail: kontrolessistemas@atea.lt



QUESTIONS?

